



AMERICAN
COLLEGE *of*
CARDIOLOGY

Emerging Strategies *for* Heart Failure Roundtable

Background: Development of Clinical Policy

Identification of High-Value Clinical Topics*

- Contain two or more treatment/diagnostic choices at equipoise
- Provide guidance on new technologies
- Address a clinical need in an area with limited evidence
- Demonstrate potential to improve outcomes relative to cost

* Must meet at least 3 of these parameters



Convene Multi-Stakeholder Roundtable Meeting

- Discuss practical issues and key questions facing clinicians
- Explore “grey” areas not covered in guidelines
- Identify priority issues for the ACC to focus efforts
- Inform development of pathways, tools, and resources



Convene Independent Working Groups to Develop Solution Sets

- Expert Consensus Decision Pathway (clinical policy focused on algorithms and checklists)
- Patient Tools and Resources (e.g., infographics, decision aids)
- Clinical Decision Support Tools (translate Pathway into practice)

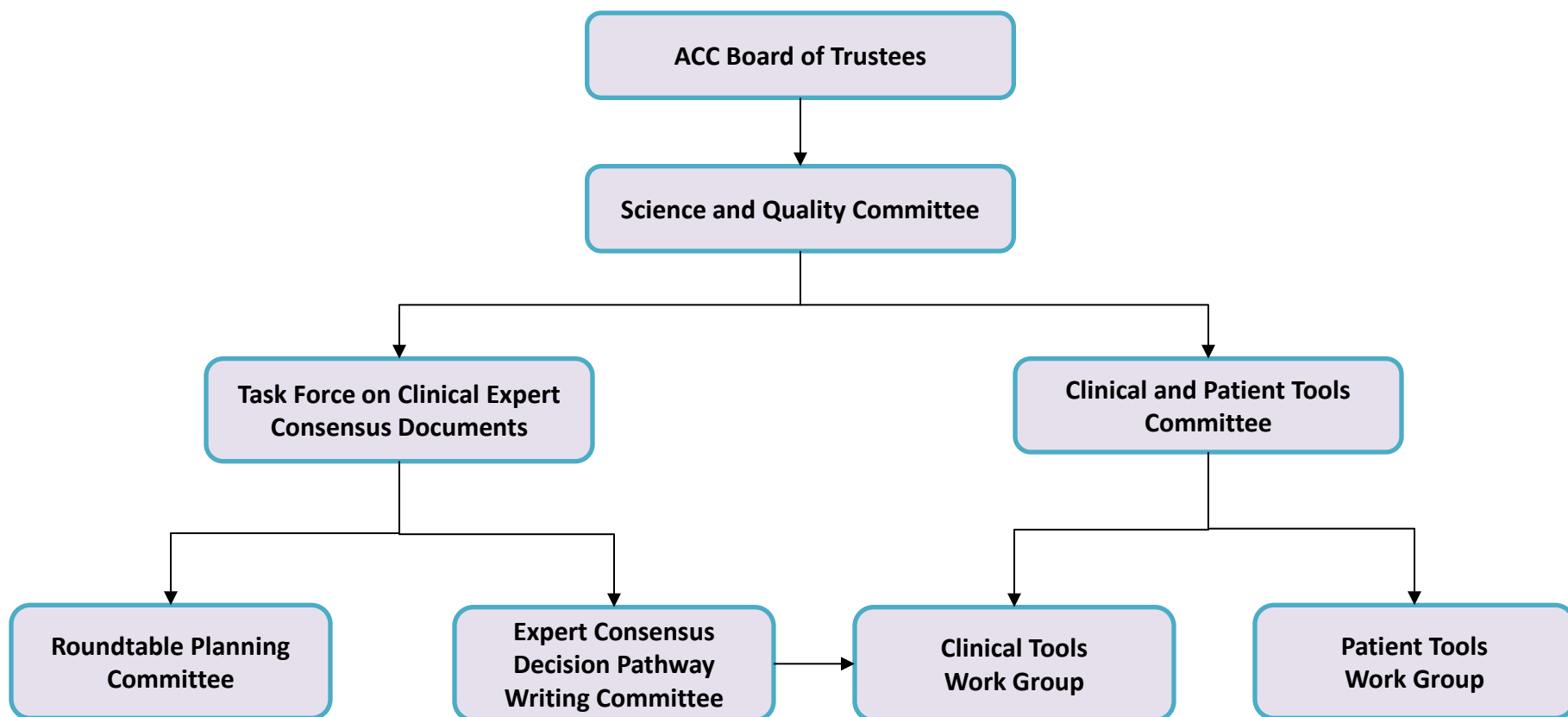
Intention of Expert Consensus Decision Pathways

- Develop clinical policy based on expert opinion in areas where evidence may be limited, new and evolving, or lack sufficient data to fully inform clinical decision making
- Designed to complement the guidelines and bridge the gaps in clinical guidance that remain
- Not intended to provide a single correct answer, but to encourage clinicians to ask certain questions and consider important factors as they come to their own decision on a treatment plan for their patients

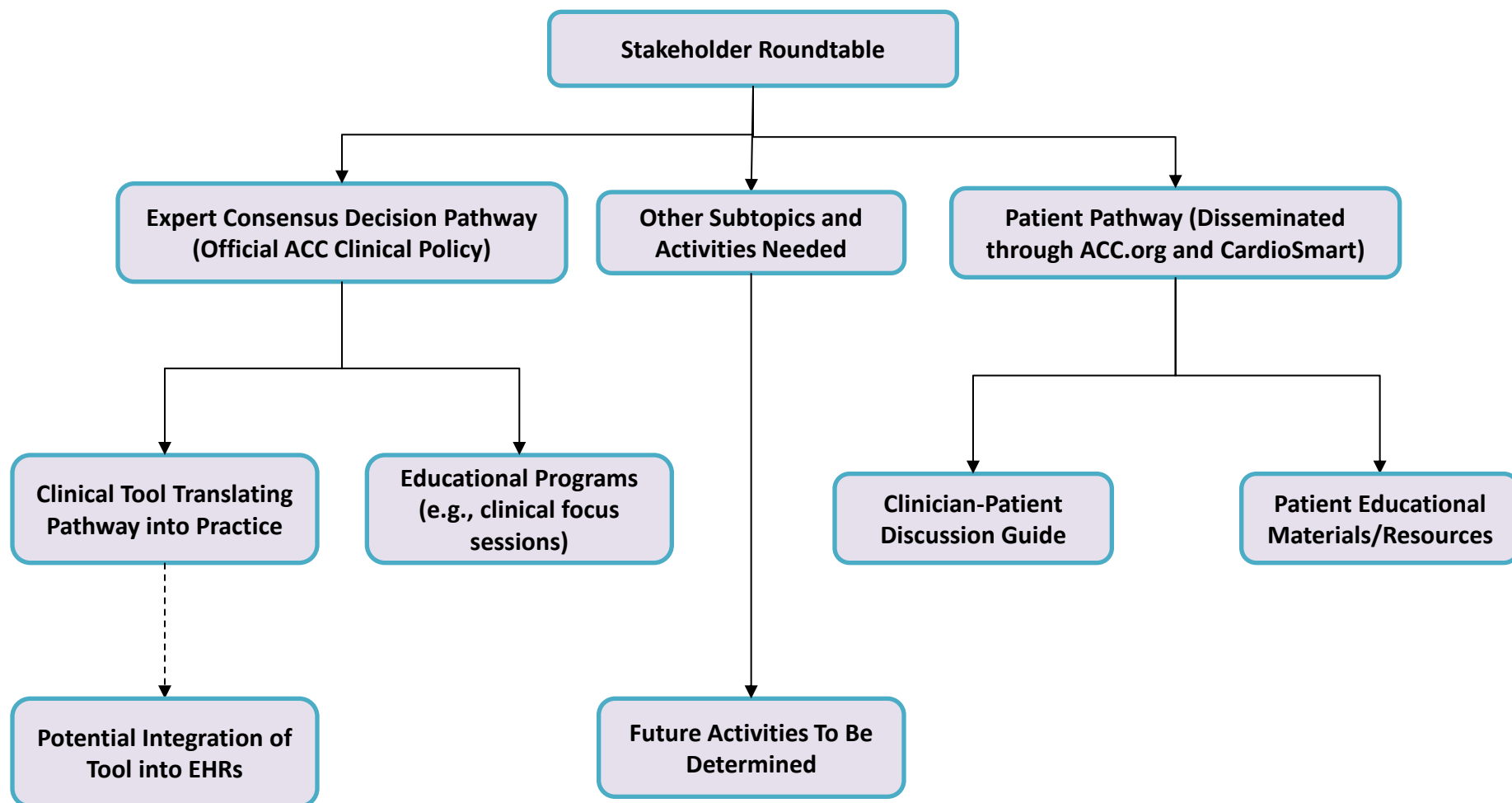
Format of Expert Consensus Decision Pathways

- Focus on concise decision pathways and/or key points of care, instead of the traditional longer documents
- Writing groups are charged with developing algorithms, checklists, and/or other content that is more actionable and can be implemented into tools or apps to accelerate the use of these documents at point of care

Oversight Structure of Relevant Activities



Overview of Activities and Next Steps



Heart Failure Roundtable Chairs

- **Dr Clyde Yancy** is Vice Dean of Diversity & Inclusion, Magerstadt Professor of Medicine, and Chief of the Division of Cardiology at Northwestern University, Feinberg School of Medicine. He was also chair of the Writing Committee for the 2016 Focused Update on the Heart Failure Guideline.
- **Dr. James Januzzi** is Professor of Medicine, at Harvard Medical School and Division of Cardiology at Massachusetts General Hospital. Dr. Januzzi is also the chair of the Expert Consensus Decision Pathways Task Force